



### PRESIDENT OF THE EMR

Luc Gillard

Board

Assembly

Director / President:  
1st Vice President & 2nd Vice President

Committee Safety

CommitteeHealth

Committee Sustainable development

Committee AG Charlemagne

Committee MAHHL+



### EMR director

1 FTE

Michael Dejozé

+ Crossquality



### Project & office coordinator

0,5 FTE

#### OFFICE

Office Manager

1 FTE



Ronja Schmetz

Secretariat

1 FTE



Nathalie Drykoningen

Communication Manager

1 FTE



Tamara Koenen

Accountant

0,1 FTE



Harrie Houben

#### POLICY OFFICERS / REPRESENTATIVES

Labour market

Region Aachen

0,6 FTE



Jan Schliewert

+ EURES

Neigh-bour languages

Dutch Limburg

0,6 FTE



Eric Lemmens

Economy & innovation

Belgian Limburg

0,6 FTE



Carine Van Hove

Security & tourism

Liège

0,6 FTE



Marc Genten

Culture & health

East-belgium

0,6 FTE



Rudolf Godesar

#### PROJECTS

People to People

1 FTE



Sonja Fickers

youRegion

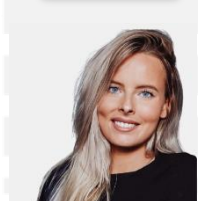
1 FTE



Paul Hölsgens

PandEMRIC

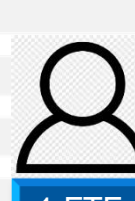
1 FTE



Kim Kessels

EMR Lingua

1 FTE



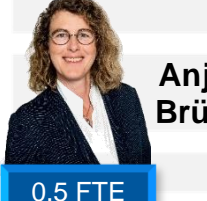
1 FTE



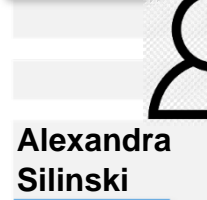
1 FTE

Three Countries Park

0,5 FTE



Anja Brüll

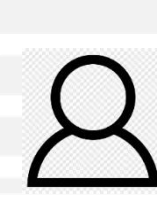


Alexandra Silinski

0,5 FTE

MAHHL+

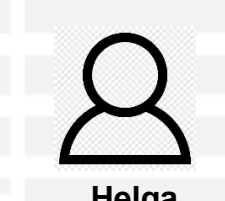
0,6 FTE



Youri Lebon

AG Charlemagne

0,6 FTE



Helga Klinkers



Patrick Hahne

euPrevent

EMRIC

- Euregio Meuse-Rhine
- Partner regions
- Extern